

# Datastream Web Service Getting started with EViews

## Introducing Datastream Web Service via EViews®

Datastream is the world's leading time series database, enabling strategists, economists and research communities' access to the most comprehensive financial information available. With histories back to the 1950's, you can explore relationships between data series; perform correlation analysis, test investment and trading ideas and research countries, regions and industries.

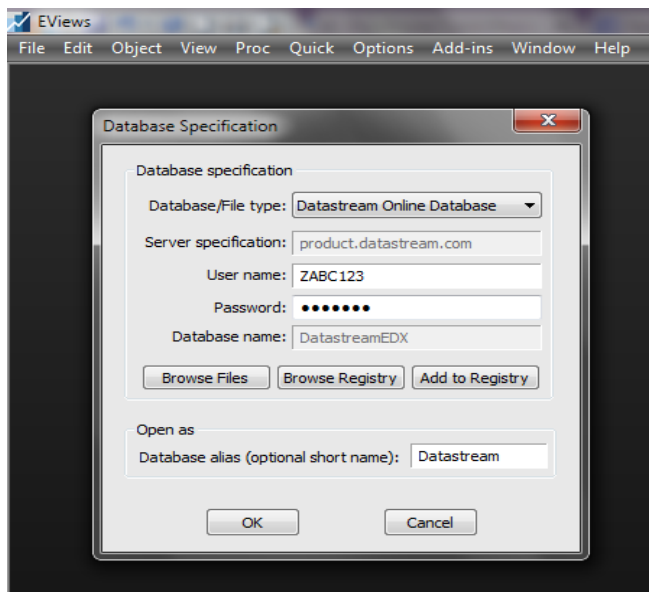
Datastream content is available via EViews 10 Enterprise using the Datastream Web Service (DSWS) tool. EViews offers access to powerful statistical, forecasting, and modelling tools through an innovative, easy-to-use object-oriented interface.

This document provides examples on how to: access DSWS via EViews, search for the desired instruments and run simple requests. It also gives basic information on usage limits.

## Requirements

- A Datastream Child ID, with access to DSWS API
- EViews 10 (or above)

## Getting started



To start accessing Datastream Web Service via EViews a valid Datastream ID and Password is required which has permission enabled for Datastream Web Service access.

A small download and install is required to enable EViews to connect to Datastream. This can be retrieved from the Developers Portal: <https://developers.refinitiv.com/eikon-apis/datastream-web-service/downloads>

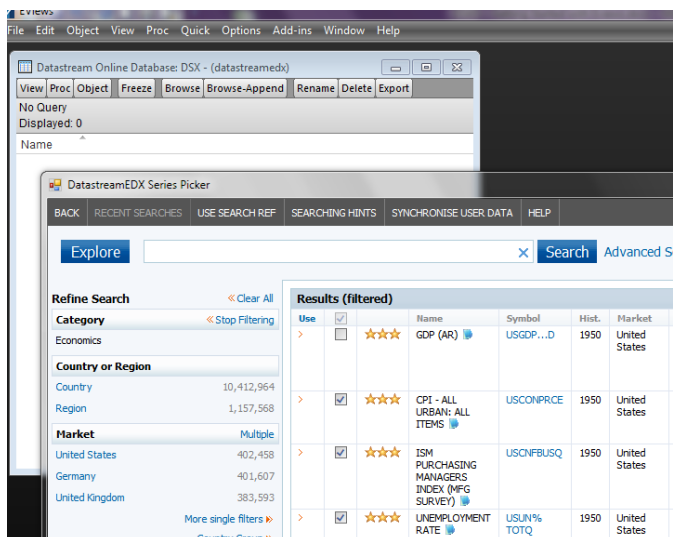
There are two versions of the install available:

- DatastreamEDXSetup32.msi
- DatastreamEDXSetup64.msi.

Once you install the EDX file from the main menu select File/Open/Database. From here choose Datastream Online Database, as it is visible in screenshot above. Do not choose any other database named Datastream; these will be removed in future releases of EViews.

Enter the Datastream child ID; this will be in the format ZABC123 and password. If you are unsure of this, contact your account manager.

## Running Simple Requests within EViews



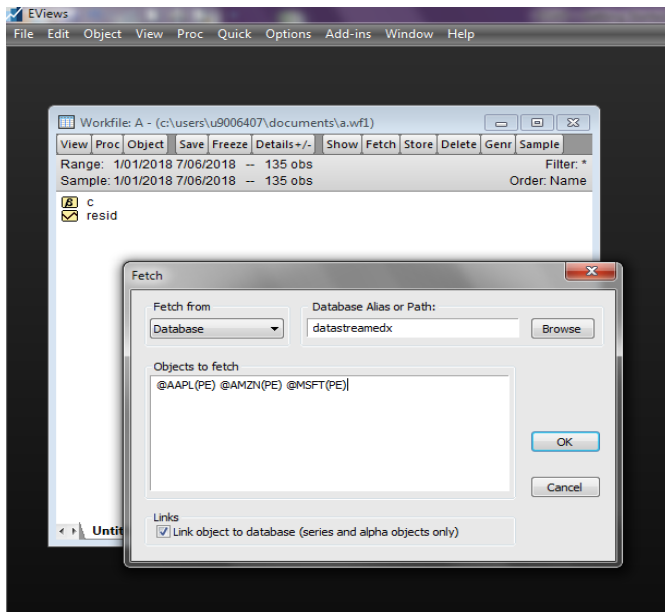
To access the Datastream powerful series look up tool, Navigator, click on Browse. This will open up a new window where users have full functionality to search for desired series.

It's recommended to retrieve series that have the same frequency (Daily, Weekly, Monthly, etc).

When series are returned to the workfile a preview can be viewed by right click and choosing preview.

To add more series, click on Browse-Append. The fetch command can be used if the series codes have been identified.

## Using the Fetch command to retrieve series and datatypes



For expert entry, the Fetch command allows a user to input codes + datatypes into their workfile.

The screenshot on the left shows three American stocks (@AAPL, @AMZN and @MSFT), using the PE (Price/Earnings ratio) data type.

For definitions or a full list of available data types then visit DFO.

## Size of requests

Users are advised of the maximum size limits of DSWS requests via EViews:

- Maximum instruments per request 50
- Maximum datatypes per request 50
- Maximum items (instrument x datatypes) per request not to exceed 100